

FLYFLY HOBBY MFG



广东省东莞市虎门镇太宝路虎门寨第一工业区3栋4楼
4 / F, block 3, humen village no 1 industrial zone , taibao road, humen town,
dongguan city, GuangDong Province. China.

Contact: Ms Mandy Mob: 13609687704 /13433088110 Tel:(+86)0769-85012227 /85012110

Web Site:<http://www.flyflyhobby.com> Mail:info@flyflyhobby.com Taobao:<https://flyflyhobby.taobao.com>

F4U Corsair /海盜

Composite fuselage, Balsa wood wings / 复合材料机身 + 轻木机翼

Wingspan / 翼展: 1800mm	Power / 动力: 30-35CC Engine 引擎
Length / 机身长: 1470mm	Propeller / 桨: 19*8"
Wing Area / 翼面积: 62sq.dm	Servos 40g Standard / Torque: 9.8kg: 9pcs
Flying Weight / 起飞重: 8200g	Battery / 电池: Lipo 2S 2200mAh

Warning!

First-time fliers should seek advice on pre-flight adjustments and assembly from experienced fliers. Remember that flying a badly adjusted aircraft is very dangerous!

In the beginning, novice fliers should always be assisted by an experienced flier and should never fly alone!

This model's aircraft is designed to be powered by an engine. Installing a over power engine, or flying this model aggressively may lead to serious damage and accidents!

UNDER SAFETY PRECAUTIONS

This radio controlled plane is not a toy!

Always keep this instruction manual ready on hand for quick reference.

Assemble this kit only places out of children reach.

First-time builders of RC radio power model should seek the advice of experienced modellers before beginning assembly and if they do not fully understand any parts of the construction.

Taking out liability insurance is recommended.

You are responsible for this model's assembly and safe operation.

				Battery required Li-Po Batteries (Motor) A-A-size Batteries (Transmitter)

Glow Engine fuel 	Ignition 	Engine Starter 	Fule Pump 	12V Battery (For starter) 	Battery for Rx
----------------------	--------------	--------------------	---------------	-------------------------------	--------------------

Main body

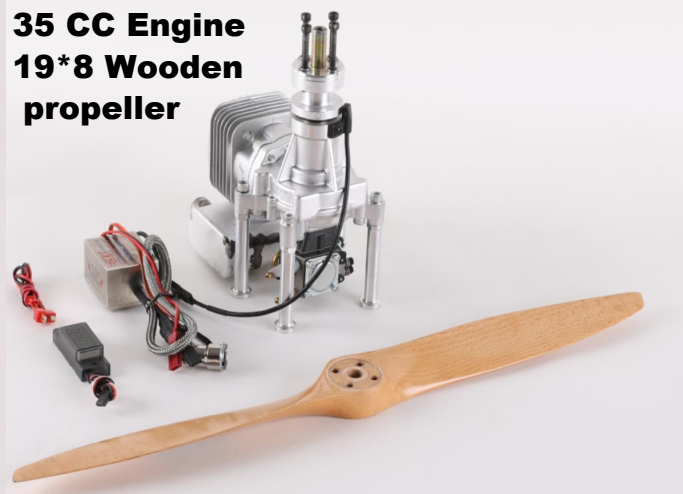


Option Electric scale landing gear

Basic assembly parts



35 CC Engine 19*8 Wooden propeller

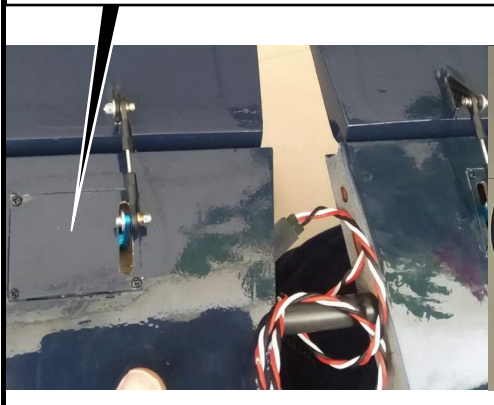


Elevator

Factory design elevator servos on the stabilizer, because too thin, so it will AB glue way of the servos on the cover, Basic comes carbon horns, M2 hinges.

AB glue Servos on the servo cover, screws lock on the stabilizer

AB glue hinges & Horns, then connection push rob



Rudder

Steel horns

Basic comes with the steel horns, you need made L shape for hold the rudder together, and come soft wire, stop lock, adjustment steel clevis for soft wire.



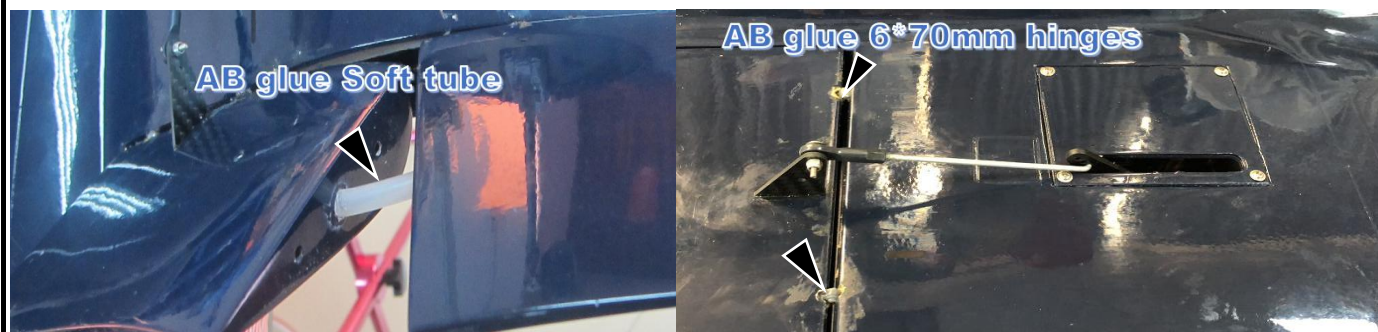
Landing gear

Option Electric scale landing gear is no including in the kit, kit comes with the plywood for the retract.

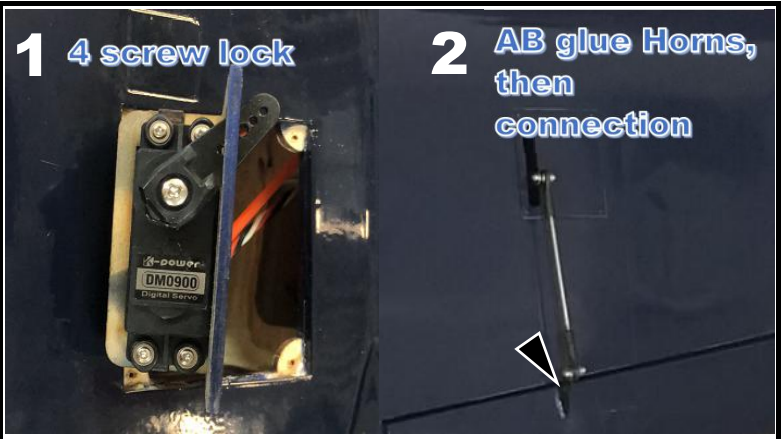


Wings: Flaps & Aileron

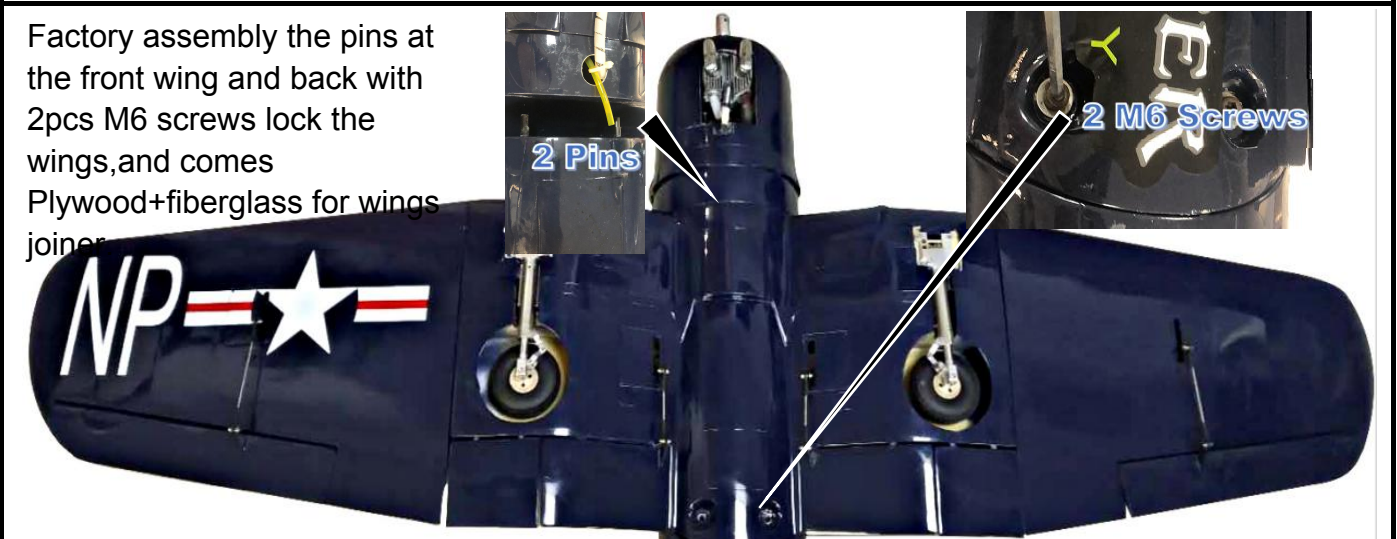
Flaps basic come with a soft tube for hold flap together, 6*70 hinges. Please AB glue fixed one side tube, do not glue other side, then can be one servo working 2 flaps, see photos.



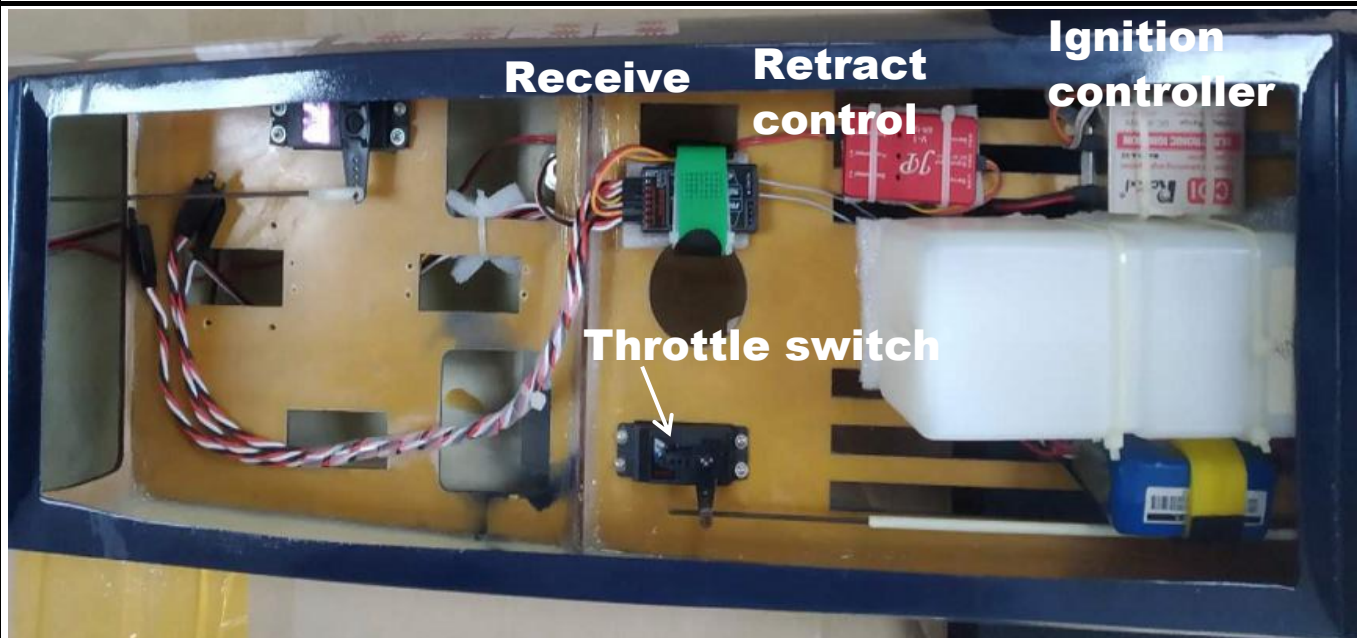
Basic had servo tray on the servo cover for flaps and ailerons, comes 6*70 hinges, carbon horns, ball link+M3 push rod, you will need AB glue of the hinges, horns then screws lock the servo on the servo tray before connection the push rod, see the photos.



Wings join



Adjustment

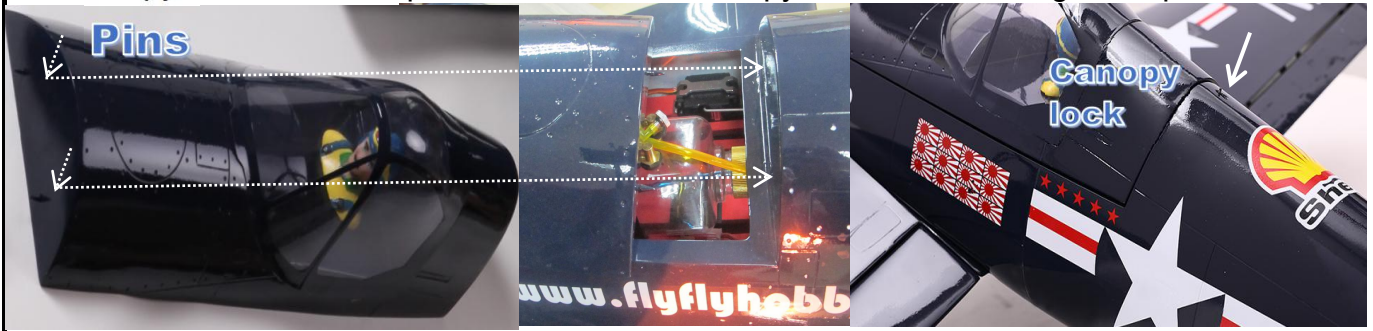


35CC Engine



Canopy

The canopy come with the 2pins at front and the canopy lock on the fuselage, see photos

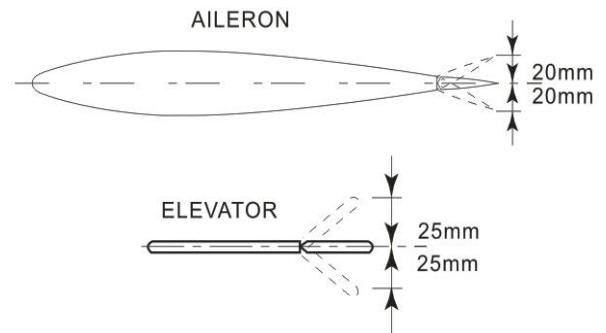
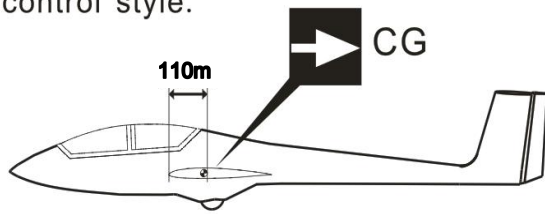


Adjustment





The CG position will vary depends on you requirement. adjust the CG to achieve your control style.



Copyright 2019 Flyfly hobby
 Web: www.flyflyhobby.com

Designed and Manufactured by: Flyfly hobby Mfg
 Email: info@flyflyhobby.com